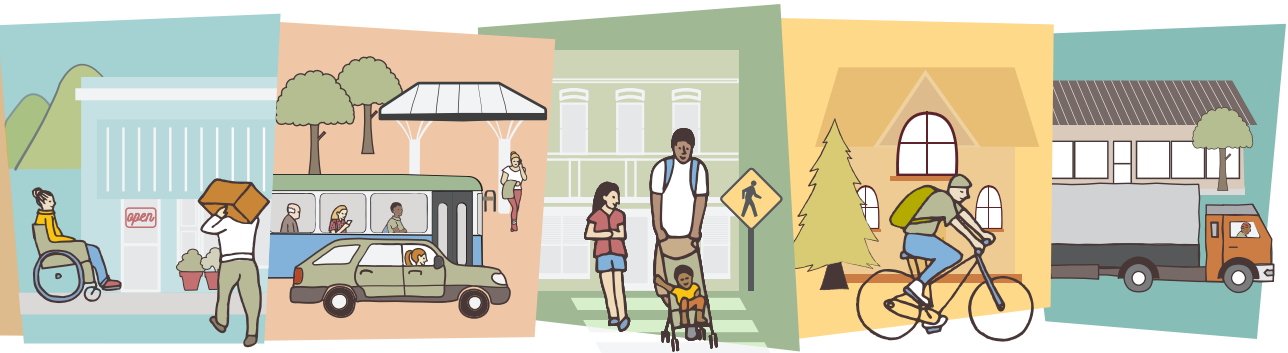


# OUR MAIN STREET SPRINGFIELD



MAIN STREET SAFETY PROJECT | 20th Street to 72nd Street

## Help make Main Street safer for people walking, biking, driving, and taking transit.

Springfield's Main Street is consistently ranked as one of the **most unsafe city streets in Oregon**, based on the severity and frequency of crashes.

**Traffic on Main Street will likely go up by 20-30% in 20 years**, and the risk of crashes will increase — unless we act now to plan changes that will **save lives, reduce injuries, and lessen property damage**.

That's why we need your input for the Main Street Safety Project:

- What safety issues have affected you on or near Main Street?
- How can we make sure the street keeps its role as a business and commercial center?
- How we can ensure the street will move enough people and goods?

## JOIN THE CONVERSATION



Check out [mainstreetsafety.org](http://mainstreetsafety.org) and sign up for our email updates for the latest information and events.



Participate in an Online Open House on our website.



Watch for a series of meetings for residents, business owners and property owners (posted on our website).



Contact our team for more information.

## DID YOU KNOW?

**653 crashes** between 2012-2016, **24 severe crashes** with 4 resulting in the **loss of 6 lives**.

Only 3% of all crashes involved **pedestrians** — yet they are involved in **75% of fatal crashes** and **21% of all crashes** deemed either fatal or severe.

**Intersections with the highest number of crashes:** 42nd Street (70 crashes), Bob Straub Parkway (38 crashes), 58th Street (36 crashes), and 28th Street (34 crashes).

**Route 11 along Main Street has the second-highest ridership** in the LTD system, serving over 1,500 people daily!

[www.mainstreetsafety.org](http://www.mainstreetsafety.org)

**Project contact:** Molly Markarian, City of Springfield, 541.726.4611, [info@ourmainstreetspringfield.org](mailto:info@ourmainstreetspringfield.org)



# WHY IS THIS IMPORTANT?

## SAFETY

This section of Main Street is one of Oregon's most unsafe city streets for those who walk, bike and drive.

## WE'RE GROWING

Traffic on this corridor will likely increase by 20-30% in 20 years, so problems will be even worse in the future.

## THE HEART OF OUR CITY

Main Street is a key east-west transportation corridor, an economic engine in the heart of Springfield, and a major transit route.

## A MAJOR TRANSIT CORRIDOR

This is one of the most heavily used transit routes in Lane County.

## A HEALTHY AND SAFE MAIN STREET FOR ALL

Improvements are needed to ensure safe, accessible transportation for everyone, whether by foot, bike, mobility device, bus or car.

## PROJECT PURPOSE

Springfield's Main Street is consistently ranked as one of the most unsafe city streets in Oregon based on the severity and frequency of traffic crashes. ODOT and the City must address this problem to save lives, reduce injuries, and lessen property damage due to crashes. The purpose of the Main Street Safety Project: Planning Phase is to select infrastructure solutions that will make Main Street safer for people walking, biking, driving, and taking transit.

The selected safety improvements will provide for the movement of goods and people, support the economic viability of the corridor, accommodate current bus service and future transit solutions, and complement traffic safety education and enforcement.

## TARGET SCHEDULE



There's already been a lot of work done! The Main Street Corridor Vision Plan, ODOT's 2011 Safety Study, the Pedestrian Crossing Project and the Main-McVay Transit Study are some of the building blocks of this project, and coordination between projects is a key part of our planning phase. For more information on past and current projects, check out our website!

## PROJECT AREA



[www.mainstreetsafety.org](http://www.mainstreetsafety.org)

**Project contact:** Molly Markarian, City of Springfield, 541.726.4611, [info@ourmainstreetspringfield.org](mailto:info@ourmainstreetspringfield.org)

